

# Blended Aim: Gabriel Security Systems

Giorgos Papadourakis, Ilias Logothetis, Ioannis Giannantonakis, Ioannis Deligiannis

Department of Informatics Engineering, Technological Educational Institute of Crete

Nuno Escudeiro

Department of Informatics, School of Engineering, Polytechnic Institute of Porto

gabriel  
security systems





## Blended Aim – Addressing Problems

- ▶ Professional career depends on mobility.
- ▶ Demands several intercultural skills.
- ▶ International exposure is difficult to obtain.
- ▶ Blended mobility is rarely considered in institutes.



## Blended Aim – What it is

- ▶ An Erasmus+ funded project.
- ▶ Partnership with 10 universities from different countries.
- ▶ Offers international experience.
- ▶ Promotes students' employability.



## Blended Aim – How it works

- ▶ Students cooperate to develop a product assigned by a company.
- ▶ They meet twice during the semester of the project's acquisition.
- ▶ They use online tools for project management and team communication.
- ▶ When the product is complete it is presented to the company and gets evaluated.



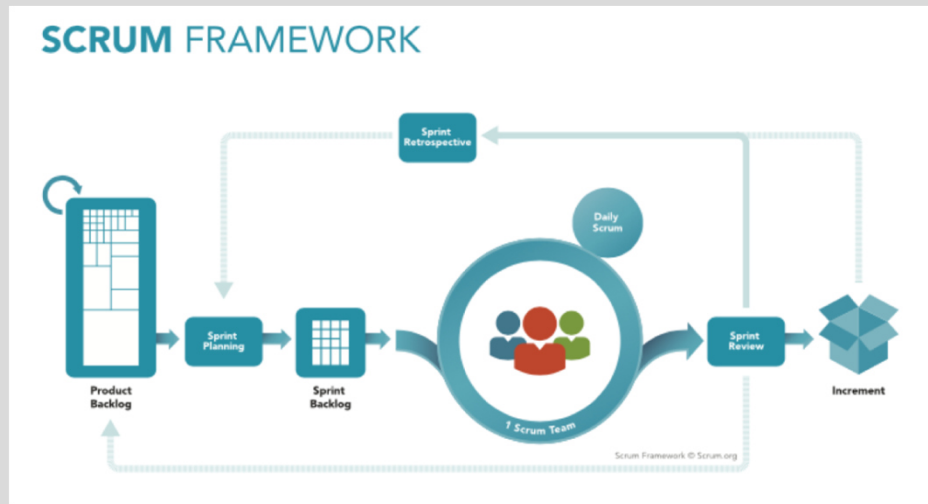
## Blended Aim 2017

This year's project goal was to design and develop an application that will allow a security supervisor to track, guide and communicate with a company's employees to make everyone feel safer as well as to help with building directions.

The project was proposed by Trilogis, an Italian computer company based in Rovereto, Italy. Trilogis focuses on advanced solutions in the fields of geography and computer science and in the management and tracking of people and equipment both outdoor and indoor.

Gabriel was based on the i-Locate project and heeds the safety of a company's employees.

## Scrum, an agile framework for completing projects



A scrum team consists of a Product owner, a Scrum master and 3 to 9 members.

The product owner sets the goals of the project in a list called product backlog.

On Sprint Planning the team decides how to accomplish the goals of each Sprint.

During each Sprint the team has daily meetings to discuss issues and work progress.

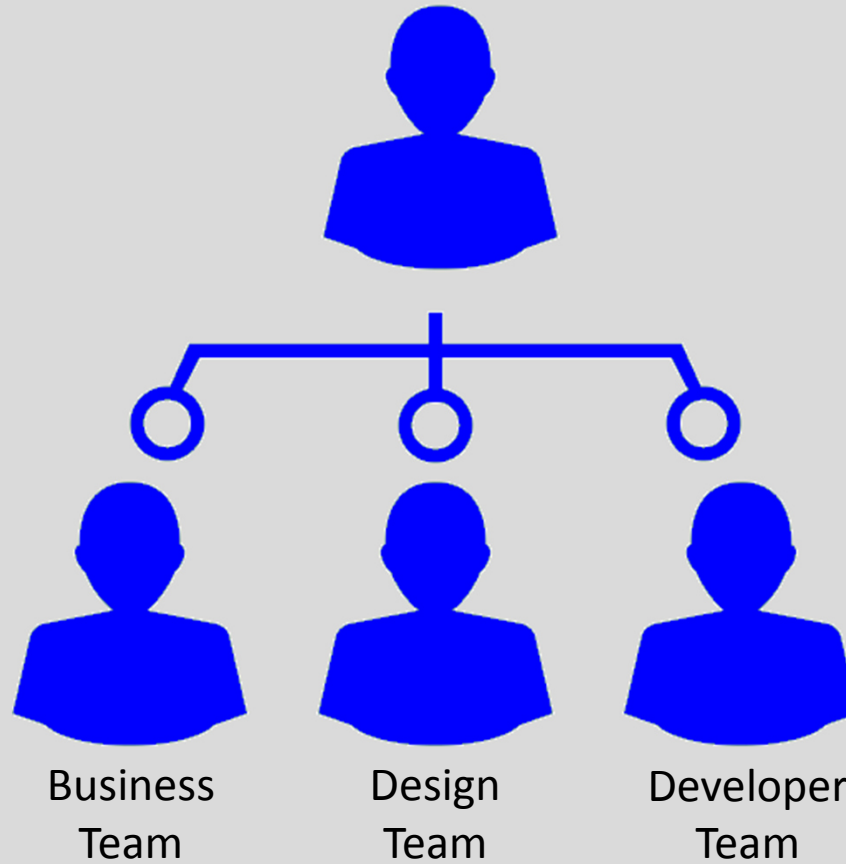
At the end of a Sprint there is a Sprint review on the work that was done.

A Sprint Retrospective follows which is an assessment on what went well, what went wrong and what could be improved .

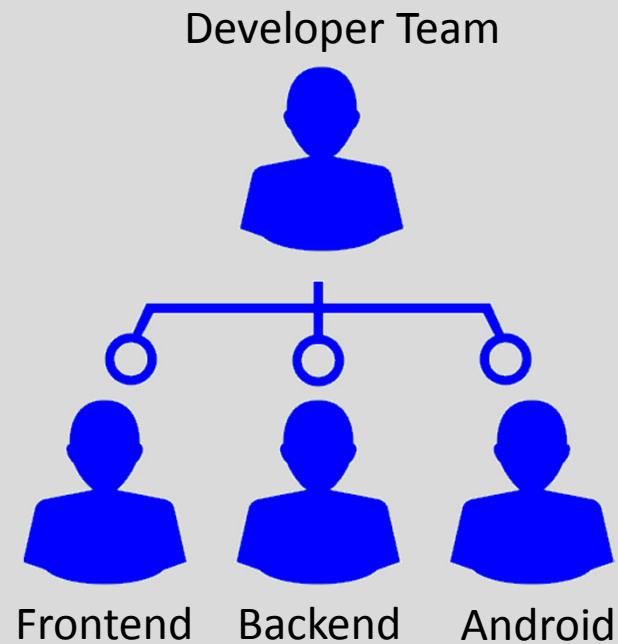
The Scrum Master helps the team remain focused on the Sprint's goals.

Due to the complexity of the given project a separation of the Scrum team was required.

Main Team



The Developer Team was further split into Frontend, Backend and Android Application.



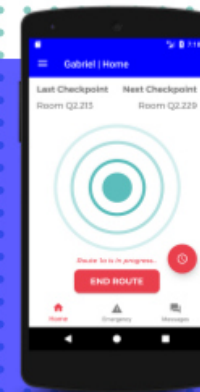
The separation to sub – teams provided better organization of the workload.





## Blended Aim 2017

Gabriel is here to protect your employees. Gabriel protects all kind of employees, such as cleaning staff, security guards, shelf-stackers, etc.; in the low/medium risk sector. By enhancing your already existing security features, Gabriel provides a better response to your employees in case of an accident. Especially lone workers will profit from this application.



Gabriel's portability and mobility is enhanced by an application which every employee can have his phone.



## Blended Aim 2017

### Features include

#### Gabriel Interface

This is the platform for your control room agent.

#### Superuser Interface

This is the administrative management interface.

#### Map Editor

Create & modify your own floor plan.

#### Android Application

Your employee(s) get(s) the Gabriel application right in their work phones.

#### Localisation

Know where your employees are in case of an accident through beacon technology

#### Safety

Your employees get immediate rescue in case of an accident, based on their localization.

#### Efficiency

Get the best use of your resources and know what is happening at all times without leaving your desk.

#### Easy-to-use

Both the app and the platform are easy to use and understand.

#### Customizable

Gabriel can be adapted to the necessities of your company. Just select from our different modules.

#### Integrated solution

You will receive monthly updates.





Blended Aim 2017

## Video presentation of Gabriel





## Blended Aim 2017 – TEI of Crete students' work

Students worked at the development of the Android Application which includes:

- ▶ The development and software design of an Android application including Activities, Fragments, Layouts.
- ▶ Using Google's API to access services such as Mobile phone sensors, Bluetooth and phone calls.
- ▶ The detection of beacons to track the employees' position.
- ▶ Sending and updating data that concerns the user and his work environment.
- ▶ Implementation of communication methods such as a chat and quick messaging.



Blended Aim 2017

Thank you!